



Access Management Software

exgarde Pro is a fully featured Access Management PC software application that combines an extremely intuitive graphical user interface and powerful integration capabilities in a single package. Supporting up to 128 doors as standard with the option to extend this with an unlimited door licence, **exgarde Pro** meets the needs of even the largest of access control networks. With **exgarde Pro** integration and expansion are key features and there are numerous possibilities to integrate with the latest CCTV and biometric technologies. **exgarde Pro** also supports, as standard, the ever popular **microgarde** controller adding even more potential.

Overview of **exgarde Pro**

Features

- Intuitive graphical user interface
- In-built Wizards for common tasks
- Compatible with 32-bit Microsoft Windows® 7, Windows® Vista, Windows® XP and Windows® 2000
- Integration capability with leading manufacturers of DVR equipment and biometric readers. TDSi **microgarde** integration included as standard
- Custom site graphics with animated icons for instant visibility of information
- Fully configurable automated database backup facility
- Numerous communication methods including TCP/IP, dial-up and GSM modems
- Detailed context sensitive help system
- Personnel image capture and Photo ID badge design and print with video verification
- Multiple workstation capabilities (subject to license)
- Advanced prioritised alarm handling for optimum operator response time
- Automatic fire door release function
- IP camera connectivity
- Integration to third-party ODBC databases (using eXFusion or Microsoft OPC server), building management, fire and intruder systems
- Backwardly compatible with previous ranges of TDSi access control units

Benefits

- Straightforward operation minimising training requirements
- Guides the operator through key operations making use of the software simple
- Support for the latest versions of Microsoft operating systems
- Provides a means of accessing and controlling third-party equipment through **exgarde Pro** without the need to run additional applications
- Allows simple operation of the system from a purely graphical interface.
- Provides peace of mind should things go wrong
- High degree of versatility allowing connection methods to suit both local small networks and site wide national and international installations
- Assists the operator at the point that help is required
- No need to purchase a photo ID badging module. Everything is included as standard
- Allows control and administration from more than one PC
- Alarm conditions are brought immediately to the attention of the operator
- Allows the automatic unlocking of fire doors in the event of a fire¹
- Standard feature allowing the display of live video feeds from any netcam camera
- A means of seamlessly transferring and populating cardholder data and events between systems.
- No need to upgrade hardware

exgarde Pro

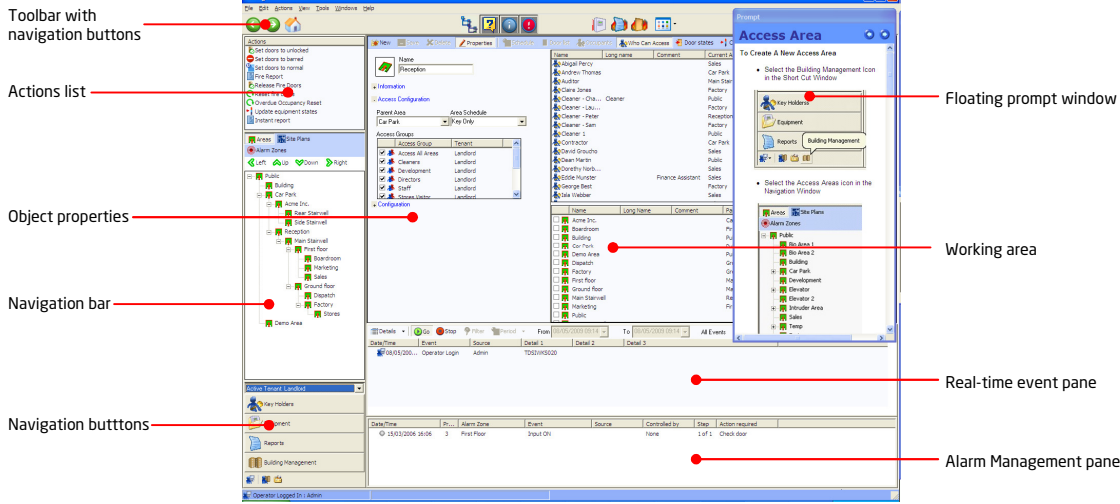


w: www.tdsi.co.uk
e: sales@tdsi.co.uk
t: +44 (0)1202 723535

¹Fire door release feature is not to be used as the primary method of releasing fire doors



Access Management Software



Technical Data

- Max doors** 128 as standard, unlimited license upgrade available
- Max cards** Controller dependant (no software limit)
- Max workstations** 25 subject to licence
- Max operators** Unlimited
- Compatible TDSi controllers** **excel2, excel4, expert2, expert4, microgarde® I, microgarde® II, System 1, System 2, System 4, Xm, Xs**
- Communications** RS-232, RS-485, TCP/IP, dial-up modem (PSTN and GSM)
- Recommended PC Specification***
 - Pentium P4, 1.7 GHz, 1 GB RAM
 - Display set to 1280 x 960, 256 colours or above
 - Microsoft Windows® 2000, Windows® XP Pro (Service pack 1, 2 or 3), Windows Vista Business or Ultimate and Windows 7 Professional or Ultimate.
 - Note all operating systems must be 32-bit.
 - 10 GB hard disk free space available, CD-ROM drive
 - USB port or parallel port for license key
 - Serial and /or Ethernet ports as required for controller network

*For systems consisting of more than 16 controllers, please consult TDSi for further recommendations

Ordering Information

- | | |
|---------------------|--|
| Part Number: | Product Description: |
| 4420-2090 | exgarde Pro |
| 4420-2092 | exgarde Pro version upgrade |
| 4420-2094 | exgarde Pro feature upgrade (see expansion options datasheet) |
| 4420-2104 | Additional 1 workstation |
| 4420-2100 | Additional 2 workstations |
| 4420-2101 | Additional 4 workstations |
| 4420-2102 | Unlimited door option |
| 4420-2103 | 1 additional tenant |

USB dongle supplied as standard, parallel available upon request



exgarde Pro



w: www.tdsi.co.uk
e: sales@tdsi.co.uk
t: +44 (0)1202 723535

Time and Data Systems International limited
Registered office: Unit 10 Concept Park,
Innovation Close, Poole, Dorset, BH12 4QT
Registered in England: 1585167